

# System Upgrades for Existing Moore **LOCKERBASKETS®**

Continuous improvements are made to the Moore LOCKERBASKET® system. While some parts have been added, changed or redesigned, all improvements and changes are designed to be compatible with existing Moore LOCKERBASKET® Systems.

The Moore Company strongly recommends that you inspect your existing changeroom facilities annually, or more often as necessary, to ensure the system is properly maintained by replacing all parts that show signs of wear, stress, loosening or deformation, or are bent, frayed, worn or damaged and by upgrading your system with the latest improvements.

## **FALL CONTROL UPGRADE MS-90R – DCD RETROFIT KIT FOR FALL CONTROL**

This new descent control device enhances the safety and reliability of the Moore LOCKERBASKET® System by automatically arresting a falling basket in the event the operator loses control of the hoisting chain or a malfunction in the equipment occurs.

The descent control device (DCD) can be easily installed in existing Moore LOCKERBASKET® Systems using the MS-90R DCD Retrofit Kit which is also available from The Moore Company.



### **Overhead Clothes Storage Systems**

The Moore Company, Inc.  
P.O. Box 3570, Charleston, WV 25337  
Phone: 304-344-8024  
Fax: 304-344-8025

[info@moorecompany.com](mailto:info@moorecompany.com)

[www.moorecompany.com](http://www.moorecompany.com)

© The Moore Company, Inc. 2012





THE MOORE COMPANY DESCENT CONTROL DEVICE IS INTENDED FOR USE WITH AND ONLY ON A MOORE COMPANY LOCKERBASKET® SYSTEM THAT HAS BEEN PROPERLY INSTALLED IN ACCORDANCE WITH THE MOORE COMPANY INSTALLATION INSTRUCTIONS. THE DEVICE IS NOT INTENDED FOR USE IN ANY OTHER SYSTEM OR FOR ANY OTHER PURPOSE.

## **MS-90R – DCD RETROFIT KIT FOR FALL CONTROL** CONTINUED

### **Parts Required for DCD Retrofit Kit**

**Retrofit parts required (per unit) for MS-90R Descent Control Device attachment to a standard Moore LOCKERBASKET® System. Use only Moore designated and supplied parts:**

- MS - 90 One (1) MCO-90A Descent Control Device with MCO-38 (3/8") Quick Link with MCO-90C Basket Coupler
- MCO-8 One (1) Hanger Bolt with nut (for securing Descent Control Device or lanyard to MOORFRAME® rails)
- MCO-24 One (1) Serving Sleeve (for reforming cable loop through basket coupler)
- MCO-25 One (1) Thimble (for reforming cable loop through basket coupler)
- MCO-14 One (1) (1/4") Quick Link (larger link for attaching hanger hook to Basket coupler)

Where the height of the MOORFRAME® rail is greater than 17'-0" from the finished floor, the following additional parts also are required:

### **CABLE LANYARD**

- MCO-23 Polycore cable, field cut to length as determined by the distance of the MOORFRAME® rails over 17'-0" from finished floor
- MCO-24 TWO (2) Serving Sleeves (for forming a cable loop with thimble around the MCO-8 Hanger Bolt and the MCO-38 (3/8") Quick Link
- MCO-25 One (1) Thimble (for reforming cable loop around MCO-8 Hanger Bolt. One is not needed for the cable loop around Descent Control Device's MCO-38 (3/8") Quick Link)
- One (1) MCO- 26 & 27 Cable Tools\*\*

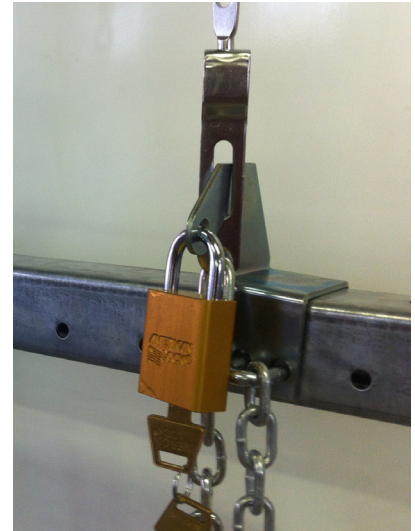
### **OPTIONAL CHAIN LANYARD** (for ceiling heights 17'-25' only)

- MCO-100 Chain (sold in 9'-0" lengths. Field cutting may be required. Specify quantity)
- MCO-13 One (1) (13/16") Quick Link (for connecting chain to MCO-38)

## LOCKING MECHANISM

### MCO-9 ANCHOR HOOK

• The new MCO-9 Anchor Hook replaces the MCO-15 Locking Bolt. The new Anchor Hook offers a strong and easy means of securing the locking plate the the Locking Rail when the LOCKERBASKET is in the raised position. The Anchor Hook is designed to be easily installed in all existing Moore Installations.



**MCO-9 ANCHOR HOOK**

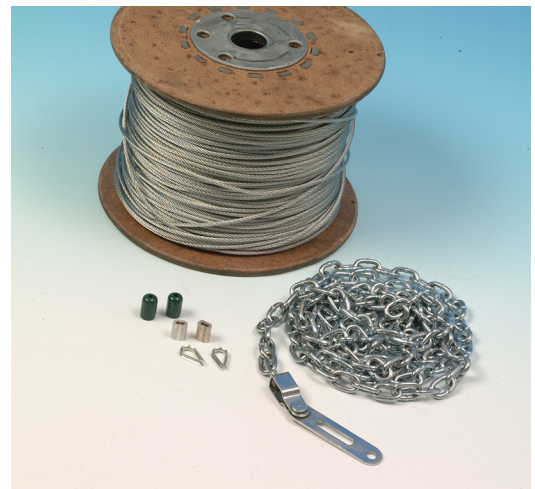
**MS-70 CONVERSION KIT**— For pricing conversion kits for the replacement of MCO-6M chain operating equipment or MCO-120/MCO-23 cable chain hoisting system to NEW hoisting assembly:

1. Determine the number of LOCKERBASKET® units which require replacement.
2. Determine the average ceiling height (from the bottom cord of the joist or purlins to the floor).
3. Call your distributor or The Moore Company, Inc. for current pricing.

Retrofit parts required (per unit) for MS-70 Conversion Kit for a standard Moore LOCKERBASKET® System. Use only Moore designated and supplied parts:

- One (1) MSA-10 Chain Hoisting Assembly to include 9'0" chain, Quick Link and Locking Swivel
- 16'-0" MCO-23 Polycore Cable (NOT PRE-CUT) required amount for an average ceiling height up to 16' (4880mm). Add 1' cable for each 6" of additional ceiling height.
- Two (2) MCO-19 Vinyl Cable Sleeve Guards
- Two (2) MCO-24 Aluminum Serving Sleeves
- Two (2) MCO-25 Thimbles
- Two (2) MCO-7 4 3/8" diameter Cable Pulleys
- One (1) MCO-26 & 27 Cable Tools\*\*

\*\* Conversion Kits are shipped complete as outlined above. One (1) set of cable tools are supplied free of charge (one set per facility) for all orders 50 units and greater. Orders less than 50 units, cable tools can be supplied on a sixty (60) day memo invoice.



**MS-70 CONVERSION KIT**

# MISCELLANEOUS

## 1. Safety Placards

- One placard to be posted at each point of ingress/egress. This eye-catching and durable laminated signage contains updated operating and service instructions with important and required information, instructions and warnings for the proper and safe operation and service of the LOCKERBASKET® overhead clothes storage system.

## 2. Replacement parts for worn, missing or broken parts

- Sketches showing the system elevation, the individual parts and their associated nomenclature are provided on page 6 of this pamphlet to assist you with the identification and ordering of the necessary parts for your system. Please feel free to contact us at any time with questions or concerns you may have or simply contact your local distributor for assistance.

## Technical Information and Support for expanding or modifying existing changerooms.

The Moore Company provides preliminary layout assistance, estimating or other technical information for the Owner and its Design Professionals. When designing facilities, remember that LOCKERBASKETS require a 16' (4880mm) ceiling height in the basket area and a changeroom / Mine Dry requires only approximately 5'-6"SF (0.51 m<sup>2</sup>) of floor area for the basket area and only 9'SF (0.836 m<sup>2</sup>) of floor area for both the changing area and the shower / lavatory area. For product information, specification assistance or answers to your questions, please contact your local distributor or The Moore Company directly.



## NOTICE

### **SAFETY OFFICER Inspection and Maintenance**

Periodically inspect the complete LOCKERBASKET® System, checking the condition of the cable, pulleys and chain, tightness and alignment of the Locking Bolt, operation of the pulley sheaves and the tightness and condition of all other bolts and cable fittings.

All parts that show signs of wear, stress, loosening or deformation, or are bent, frayed, worn or damaged, must be replaced with genuine Moore Company parts.

**It is critical to ensure that the system has been properly installed, adjusted, modified, serviced or maintained. These could result in injury and/or damage to the system.** The Moore Company recommends that each and every component of the system be inspected at a minimum of once per year and advises the replacement of **any** part that shows indications of wear or stress, particularly wearing surfaces or moving parts such as locking bolts (also ensure proper alignment of the Locking Bolt), pulley sheaves and housings, anchor links, cable, cable loops and connections, chain and locking plates.

Any worn, frayed or broken parts should be immediately replaced. All loose parts should be tightened. A replacement parts list has been made available with this notice.

**PARTICULAR ATTENTION MUST BE GIVEN TO PARTS THAT ARE THE LOAD POINTS FOR THE LOCKERBASKET SYSTEM. DEPENDING UPON YOUR TYPE OF SYSTEM, THESE INCLUDE, BUT ARE NOT LIMITED TO PULLEYS, LOCKING BOLTS, CUSHION SPRINGS AND LOOPS, ALL ATTACHING LINKS, CABLE AND CHAIN. ENSURE THAT THE THREADS ON THE DCD'S WEAR INDICATOR HAVE NOT BEEN BROKEN.**

During the inspection, we strongly recommend that the Safety Officer:

- Ensure your LOCKERBASKET® System has been upgraded with the latest improvements.
- Ensure that the weight in each basket complies with specified loads. **DO NOT OVERLOAD THE BASKET.**
- Ensure no equipment belts and/or tools are stored in or from the wire basket or clothing.
- Ensure that all LOCKERBASKETS® are secured with a padlock.
- Ensure that proper Caution and Warning Labels are displayed.
- Ensure that a sufficient number of Safety Plaques are properly posted in the changeroom facility and/or at the facility's designated information bulletin board.

**Please read before installing or using system  
FAILURE TO READ AND COMPLY WITH THESE INSTRUCTIONS OR ANY ONE OF THE  
LIMITATIONS NOTED HEREIN CAN RESULT IN SERIOUS BODILY INJURY OR DEATH, AND/OR  
PROPERTY DAMAGE.**



The Moore Company, Inc. shall have no responsibility for any alteration or modification of the LOCKERBASKET® system, or for the use of non-Moore Company components or products used with or incorporated into the LOCKERBASKET® SYTEM.

**ONLY QUALIFIED INSTALLERS SHOULD BE PERMITTED TO INSTALL THE SYSTEM. FAILURE TO PROPERLY INSTALL THE LOCKERBASKET® SYSTEM CAN RESULT IN SERIOUS BODILY INJURY OR DEATH AND/OR PROPERTY DAMAGE.**

**Refer to *Installation Instructions, Use & Maintenance Instructions, Operating and Service Instructions, and these Instructions and Warnings* for further assistance, or contact The Moore Company. The Moore Company shall have no responsibility for any installation of the LOCKERBASKET® system not in compliance with, and/or not maintained in compliance with, The Moore Company instructions and warnings and all applicable Regulations and Standards.**

**IT IS THE RESPONSIBILITY OF THE OWNER AND OPERATOR, AND THEIR DESIGN PROFESSIONALS,** to be certain that the LOCKERBASKET® System is properly maintained and serviced at all times in compliance with The Moore Company *Installation Instructions, Use & Maintenance Instructions, Operating and Service Instructions, and these Instructions and Warnings*, and with all applicable laws, safety rules and standards, including all applicable safety rules and regulations of OSHA and MSHA, all State and Local safety rules, regulations and building codes, and applicable ANSI/ASME Standards.

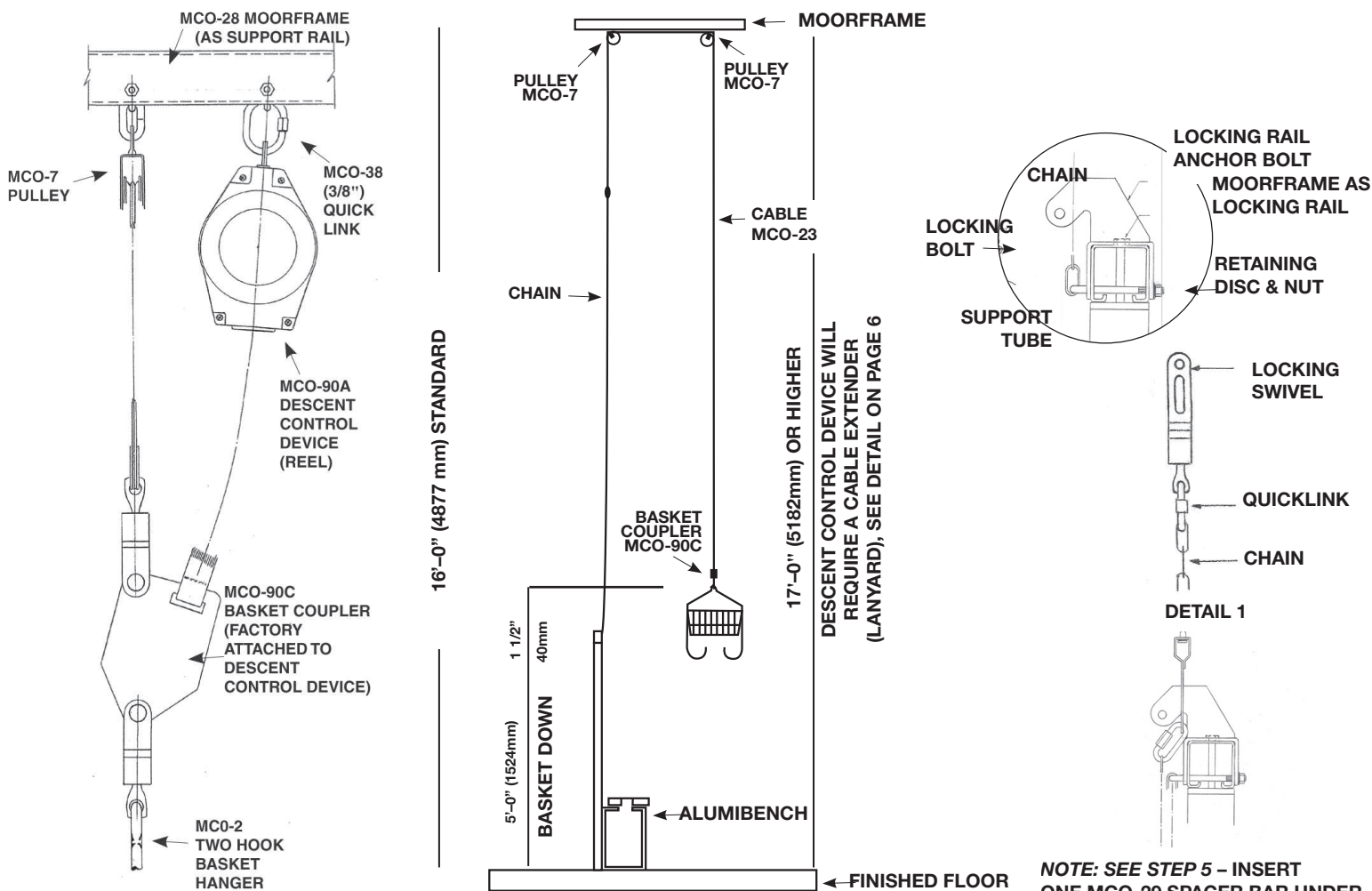
**FAILURE TO PROPERLY MAINTAIN AND SERVICE THE LOCKERBASKET® SYSTEM CAN RESULT IN SERIOUS BODILY INJURY OR DEATH AND/OR PROPERTY DAMAGE.** Refer to *Installation Instructions, Use & Maintenance Instructions, Operating and Service Instructions, and these Instructions and Warnings*, for further assistance or contact The Moore Company. The Moore Company shall have no responsibility for any failure to maintain or service the LOCKERBASKET® System in compliance with The Moore Company instructions and warnings and applicable Regulations and Standards.

**IT IS THE RESPONSIBILITY OF THE OWNER AND OPERATOR, AND THEIR OFFICERS, MANAGERS AND SUPERVISORS**, to be certain that all employees and other users of the LOCKERBASKET® System are fully and properly educated and trained by qualified personnel in the proper and safe use of the LOCKERBASKET® System, including, but not limited to, familiarity with and understanding of The Moore Company *Installation Instructions, Use & Maintenance Instructions, Operating and Service Instructions*, and all applicable Regulations and Standards and that such employees and other users do, in fact, at all times operate the LOCKERBASKET® System safely and ONLY in compliance with The Moore Company instructions and warnings and with all applicable Regulations and Standards.

**FAILURE TO OPERATE THE LOCKERBASKET® SYSTEM SAFELY AND IN COMPLIANCE WITH THE MOORE COMPANY INSTRUCTIONS AND WARNINGS AND WITH APPLICABLE REGULATIONS AND STANDARDS, AND/OR PERMITTING USE BY EMPLOYEES OR OTHER USERS NOT PROPERLY TRAINED IN THE SAFE AND PROPER USE OF THE SYSTEM, CAN RESULT IN SERIOUS BODILY INJURY OR DEATH AND/OR PROPERTY DAMAGE.** Refer to The Moore Company *Installation Instructions, Use & Maintenance Instructions, Operating and Service Instructions*, and *these Instructions and Warnings*, for further assistance or contact The Moore Company, Inc. The Moore Company shall have no responsibility for any failure to use or operate the LOCKERBASKET® System in compliance with The Moore Company instructions and warnings and all applicable Regulations and Standards.

## TYPICAL LOCKERBASKET® SETUP

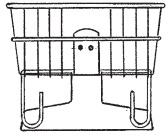
METRIC DIMENSIONS ARE IN MILLIMETERS



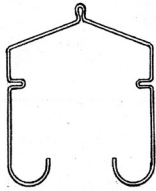
**NOTE: SEE STEP 5 - INSERT ONE MCO-29 SPACER BAR UNDER ANCHOR HOOK EVERY 2 FEET INSIDE MOORFRAME.**

**THE LOCKING, COLLECTOR AND SUPPORT RAILS ARE MOORFRAME. ALL PARTS ARE DESIGNED SPECIFICALLY FOR USE IN THE LOCKERBASKET® SYSTEM.**

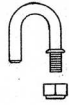
# PARTS LIST ILLUSTRATIONS



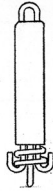
**MCO-1A  
LOCKERBASKET**



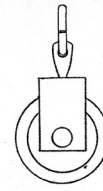
**MCO-2  
TWO-HOOK  
HANGER**



**MCO-4  
GUIDE BOLT**



**MCO-5  
SPRING ASSEMBLY**



**MCO-7  
PULLEY**



**MCO-8  
HANGER BOLT**



**MCO-20  
LOCKING  
SWIVEL**



**MCO-10  
NUMBER TAG**



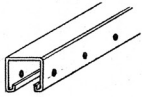
**MCO-16  
NUMBER PLATE**



**MCO-17  
PADLOCK**



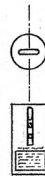
**MCO-24  
SERVING SLEEVE**



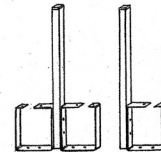
**MCO-28  
MOORFRAME**



**MS-90  
DESCENT  
CONTROL  
DEVICE**



**MCP-8  
SECURING  
PLATE  
ASSEMBLY**



**MS-372 MS-371  
DOUBLE SINGLE  
PEDESTAL SUPPORT  
UNITS**



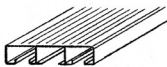
**MCO-34  
FREE-  
STANDING  
PEDESTAL**



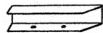
**MCO-25  
THIMBLE**



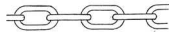
**MCO-40  
LOCKING  
RAIL END  
CAP**



**MCO-30  
ALUMIBENCH**



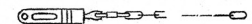
**MCO-32  
BENCH END CAP**



**MCO-100  
CHAIN**



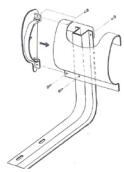
**MCP-1  
SECURITY TOP**



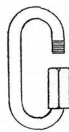
**MSA-10  
CHAIN HOIST ASSEMBLY**



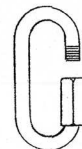
**MCO-9 ANCHOR HOOK  
MCO-HOOK BOLT**



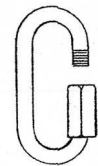
**MCO-57  
STANCHION  
MCO-56  
BACKREST**



**MCO-13  
QUICKLINK (3/16")**



**MCO-14  
QUICKLINK (1/4")**



**MCO-38  
QUICKLINK (3/8")**



## Overhead Clothes Storage Systems

The Moore Company, Inc.  
P.O. Box 3570, Charleston, WV 25337  
Phone: 304-344-8024  
Fax: 304-344-8025

info@moorecompany.com

www.moorecompany.com

© The Moore Company, Inc. 2012

